

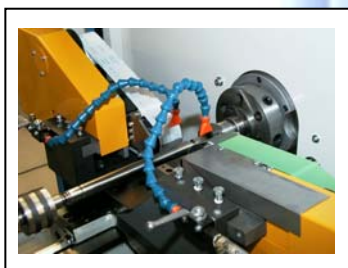
## Surface technology

ProTech AG, Unterseestrasse 81, CH-8280 Kreuzlingen

Tel.: +41 71 672 8480 Fax: +41 71 672 8481, Email: [protech.ag@bluewin.ch](mailto:protech.ag@bluewin.ch)

0746007englisch.doc

# ***Bandfinisher SLBF30-50 with program and automatic control***



## Surface technology

ProTech AG, Unterseestrasse 81, CH-8280 Kreuzlingen

Tel.: +41 71 672 8480 Fax: +41 71 672 8481, Email: [protech.ag@bluewin.ch](mailto:protech.ag@bluewin.ch)

0746007englisch.doc

### Function Principle of the Bandfinishing Device

*The band finishing device manufactures to work pieces /e.g. / shafts a defined surface structure for optimal sealing, gliding or running features.*

*The roughness of the surface will be determined exclusively by the grain size of the finishing film.*

*By varying the contact pressure, the oscillation velocity and making use of the corresponding finishing film the needed surface structure will be reached.*

### Equipment characteristics of the Bandfinishing Device

#### **Bandfinishing Device standard equipment**

- standard device right hand
- Oscillation Head with both sided storage of the contact pressure role
- Swinging excenter 2 mm / 5/64in
- Contact pressure role 65° shore
- End position control
- Constant tape feeding regulation (with PLC-Control only)
- Oscillation control



end position control

#### **Optional equipment**

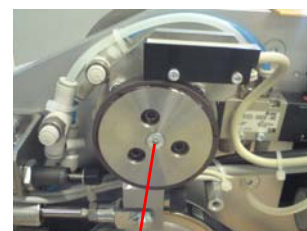
- device in mirrored version
- overhead execution
- Oscillation Head with one sided storage of the contact pressure role
- Swinging excenter 0,5; 1; 2,5 mm others on request\*
- Contact pressure role 35°, 50° or 80° shore

\* max. size 2,5 mm

#### **Additional equipment**

- Tape break control (additional switch)
- Early indicator tape end or
- Remaining tape display analog
- cuttings protection
- cuttings protection overhead version
- electrical connection via a socket housing with connection cable 5m / 5yd on both sides 26pin plug
- desire color
- Oscillation head vertical

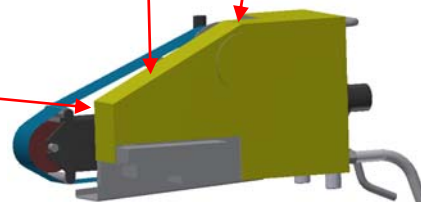
Prices on request



Tap feeding regulation sensor



Oscillation control



## Surface technology

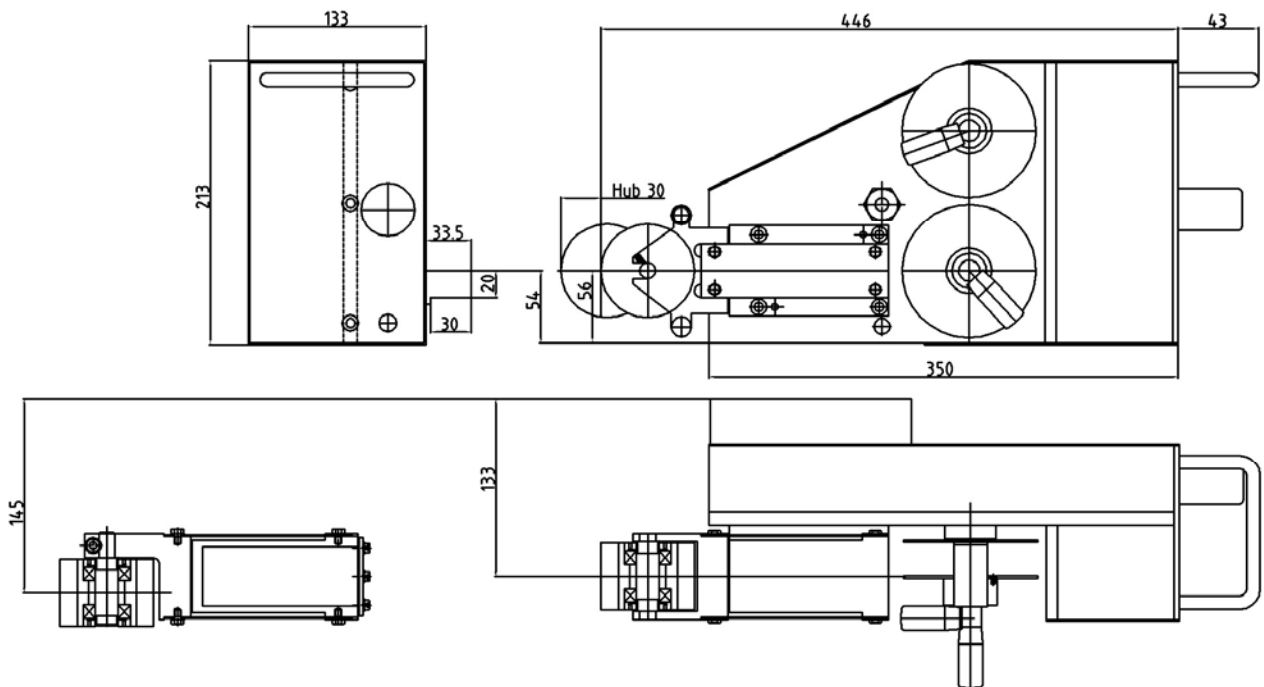
ProTech AG, Unterseestrasse 81, CH-8280 Kreuzlingen

Tel.: +41 71 672 8480 Fax: +41 71 672 8481, Email: [protech.ag@bluewin.ch](mailto:protech.ag@bluewin.ch)

0746007englisch.doc

### Technical Data:

<i>Oscillation-frequency:</i>	0-20 Hz
<i>Oscillation stroke:</i>	+/-1 mm, +/-2 mm selectable
<i>Band feed rate constant:</i>	0-90 mm/min
<i>Compressed air:</i>	max: 0.7 MPa
<i>Weight:</i>	14 kg
<i>Stroke of contact roller:</i>	30 mm
<i>Width of contact roller:</i>	50 mm
<i>Hardness of contact roller:</i>	35°, 50°, 65°, 80° Shore
<i>Contact pressure, max.:</i>	280 N
<i>Electrical supply:</i>	DC 24V



## Surface technology

ProTech AG, Unterseestrasse 81, CH-8280 Kreuzlingen

Tel.: +41 71 672 8480 Fax: +41 71 672 8481, Email: [protech.ag@bluewin.ch](mailto:protech.ag@bluewin.ch)

0746007englisch.doc

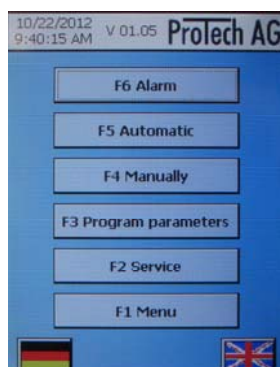
### Functionality of the control

The control is needed for the Bandfinisher SLBF 30-050. Our latest development is based on the concept of control of the Finishmasters. As control a Siemens S7 - 1200 PLC is used with the colored 5,7" touch board. A Finisher with this control is designed to operate on a conventional lathe. The control offers decisive advantages, like exact reproducibility of the operational sequences. Especially to be highlighted is the tape feeding regulation which will take large cost savings in the use of diamond abrasive film. New is also the data management which allows it the settings to put away for up to 20 parts in the device. For each part, up to 10 steps can be programmed. In addition the control provides interfaces for the launch of a parent control with feedback, processing runs, the control of a cooling and a tailstock.

### Equipment characteristics of the PLC - Control

#### The equipment in detail

- language German, English selectable
- save settings for 20 parts
- constant Band feed rate and Band break monitoring
- monitoring from all parameters and sensors
- collection statistic worth like e.g. number of items, operation hours etc.



## Surface technology

ProTech AG, Unterseestrasse 81, CH-8280 Kreuzlingen

Tel.: +41 71 672 8480 Fax: +41 71 672 8481, Email: [protech.ag@bluewin.ch](mailto:protech.ag@bluewin.ch)

0746007englisch.doc

### Technical Data:

#### Software:

*Oscillation-frequency:* 0-20 Hz, 0-1200 stroke/min

*Band feed rate constant:* 0-90 mm/min

*Memory locations:* 20 Stk.

*Languages:* German / English

#### Hardware:

*Inbound communication:* Start of external 24V AC DC

Sensor tailstock open

*Outbound communication:* processing runs

(via potential-free contacts) cooling

Tailstock opening

#### Electrical data:

*Operating voltage:* AC 1x120/230V, 4A, 50/60Hz

*Tolerance:* 85-264V 47-63Hz

*Control voltage:* DC 24V

#### Mechanical data:

*Weight:* 11.5 kg

*Size:* B=350 mm, H=390 mm, T=205 mm

#### Thermal data:

*Temperature range:* 0° - 40°C / 32° - 104°F

